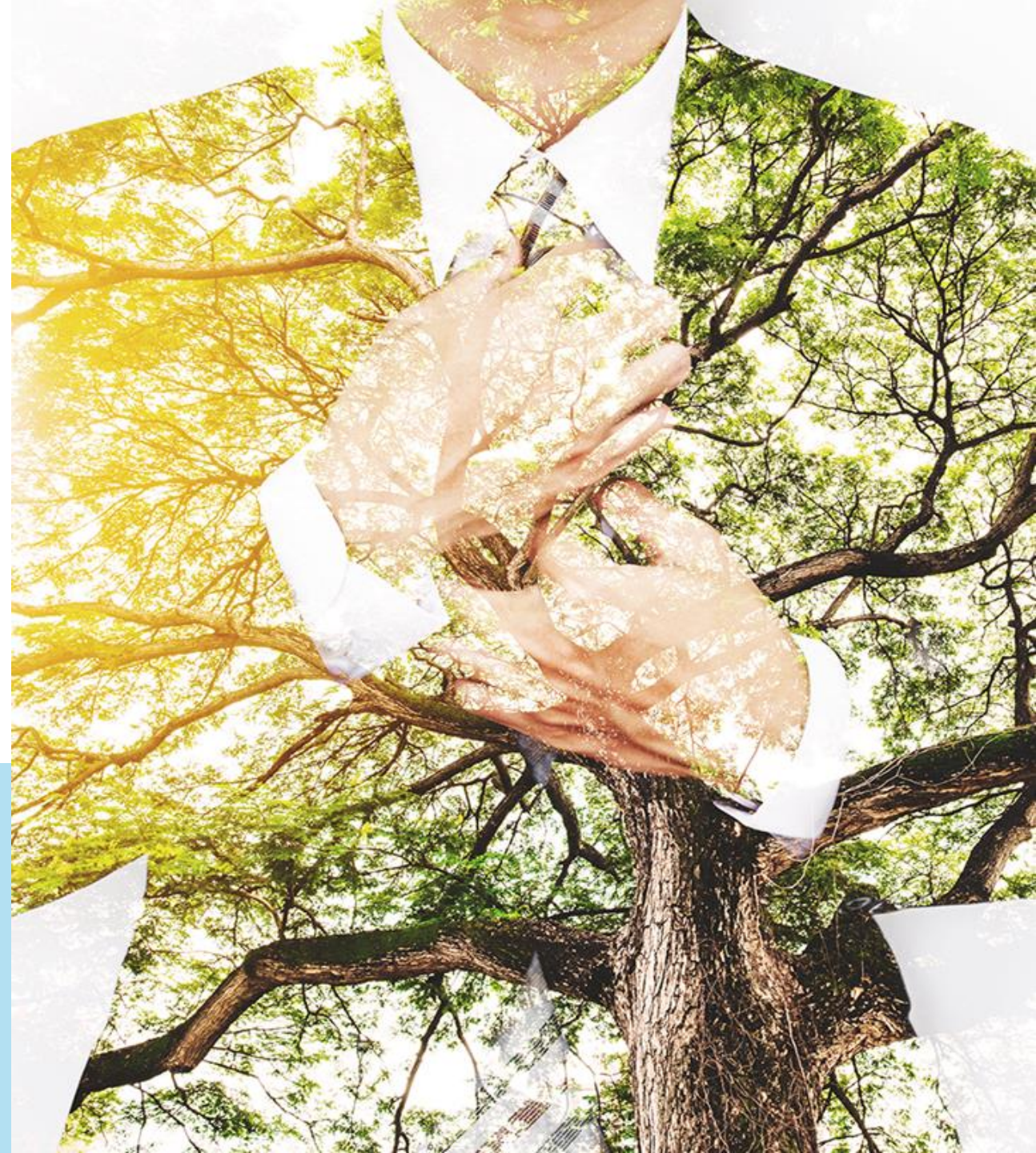


talanx.

Insurance. Investments.

ESGinvestors@Talanx

As of 31 December 2021



Talanx at a glance

Strong 2021 Group results

~24,000
employees



> 150
countries



Gross written premiums (EURbn)

45.5 (+11%)

Operating profit (EURbn)

2.5 (+49%)

Group net income (EURm)

1,011 (+56%)

Return on equity

9.6% (+3.3%-pts)

Data as of FY / end 2021; changes versus 2020 in brackets; for further information please see our FY 2021 results presentation of 14 March 2022:
https://www.talanx.com/en/investor_relations/reporting/reporting

Talanx at a glance

Strategy is flanked by our sustainability activities

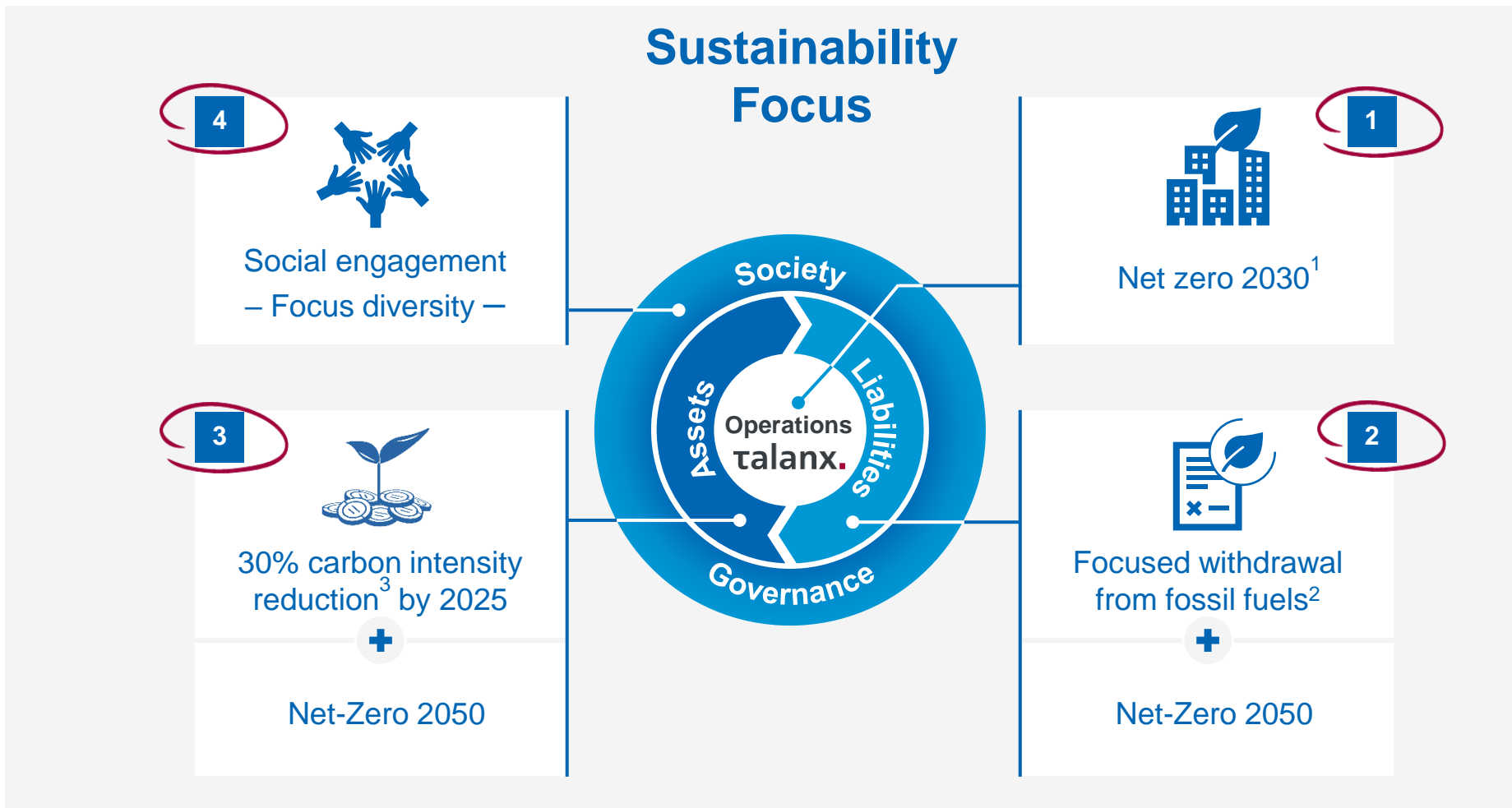
Talanx strategy



1 CO₂ neutral operations in Germany since 2019

Sustainability focus

Turning sustainability into differentiation

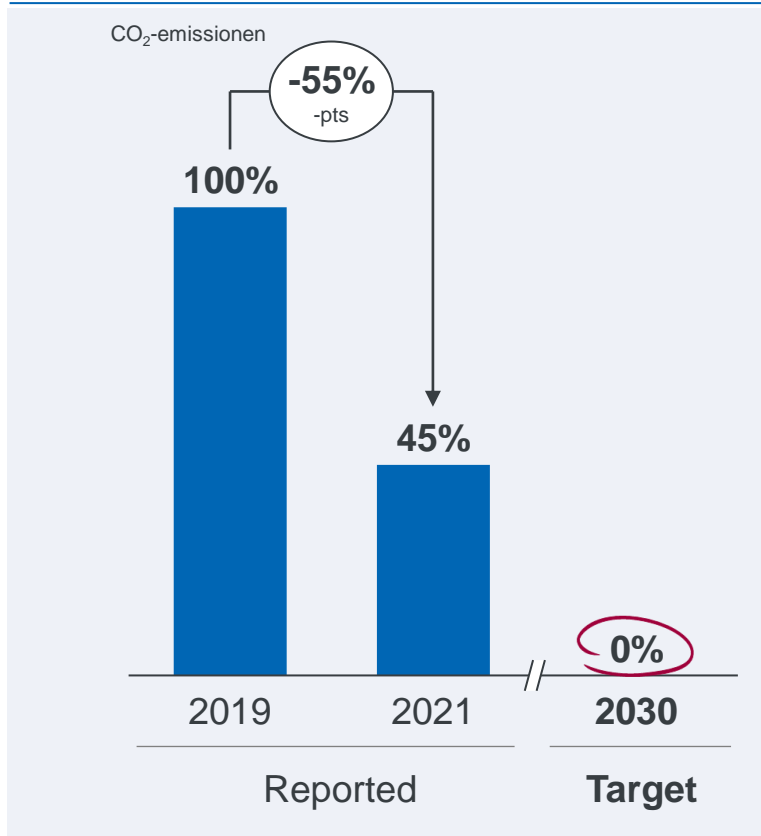


1 Climate neutral in Germany since 2019. 2 Full withdrawal from thermal coal infrastructure and oil sands until 2038, exclusion for newly planned thermal coal infrastructure and Arctic greenfield oil and gas exploration projects. 3 Reduction of CO₂ intensity of the liquid portfolio by 30% by the end of 2025 compared to the beginning of 2020

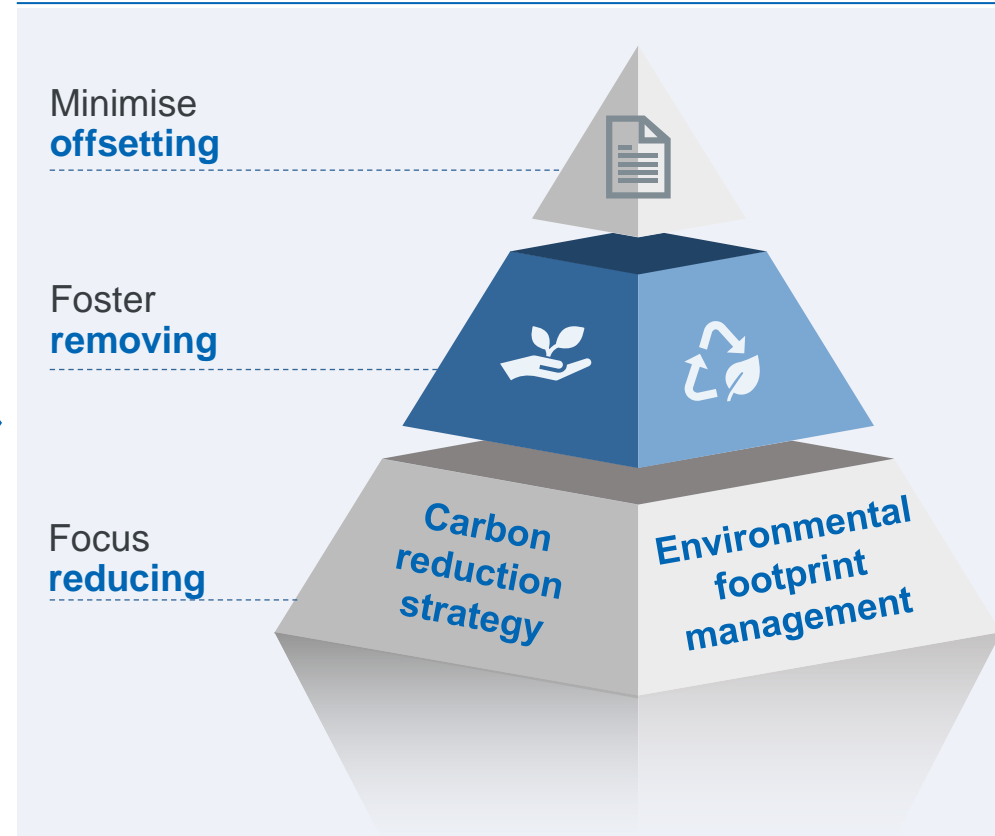
Net-zero 2030

1 We are committed to net-zero operational emissions by 2030

Pathway to net-zero



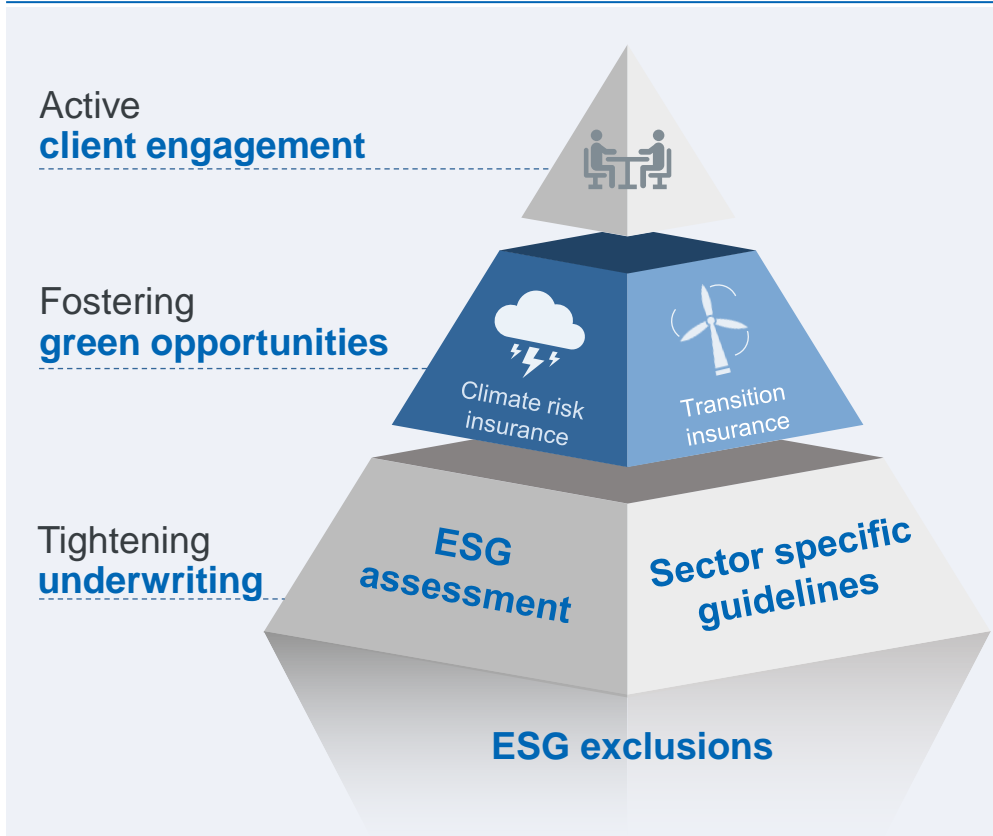
Core strategic pillars



Strategy and targets

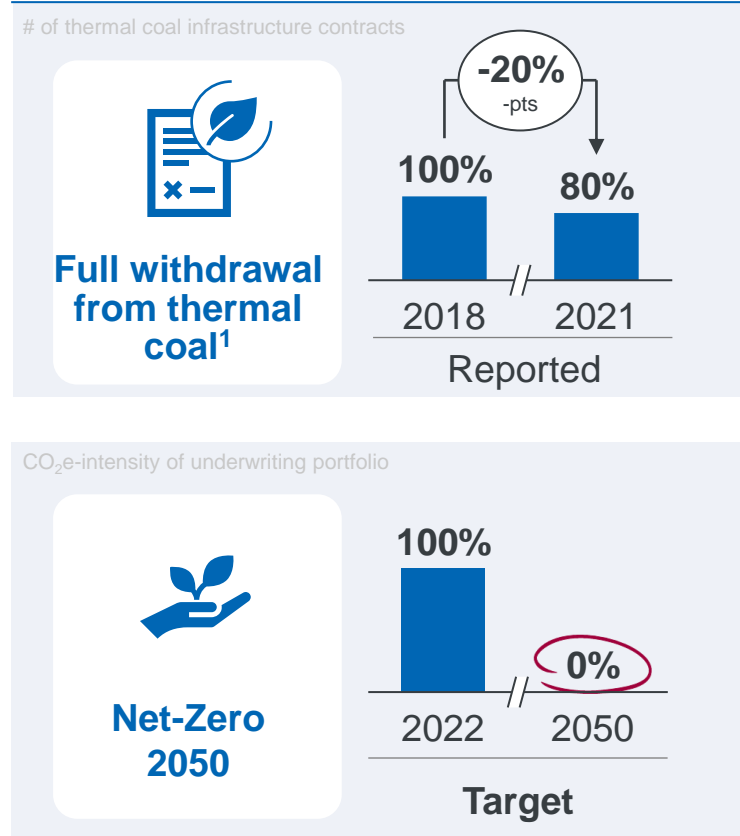
2 We want to support green transformation

Core strategic pillars



1 Full withdrawal from thermal coal infrastructure until 2038

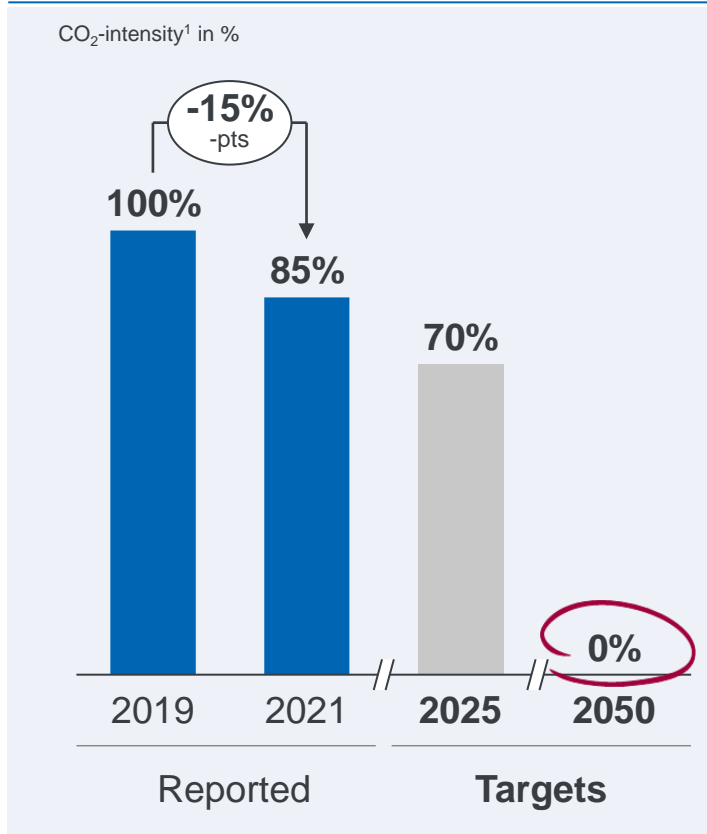
Targets



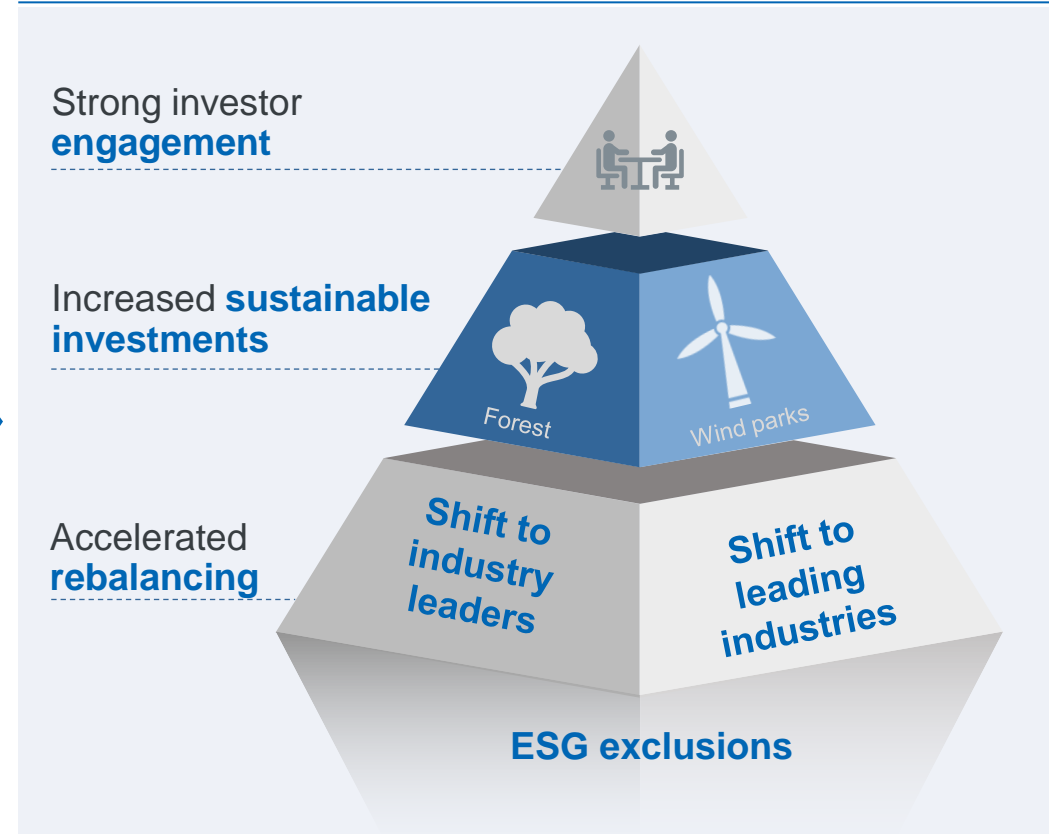
Carbon intensity reduction

3 Clear pathway towards net-zero 2050

Pathway to zero



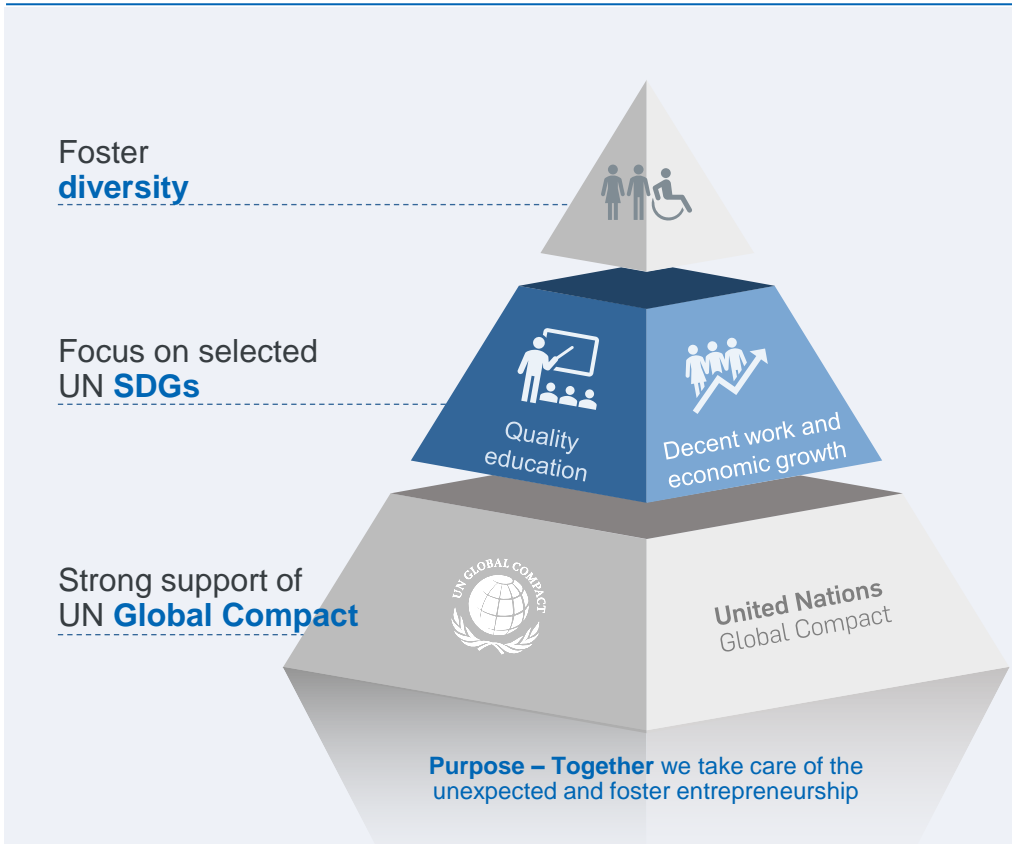
Core strategic pillars



Focus diversity

We are committed to strong social engagement

Core strategic pillars

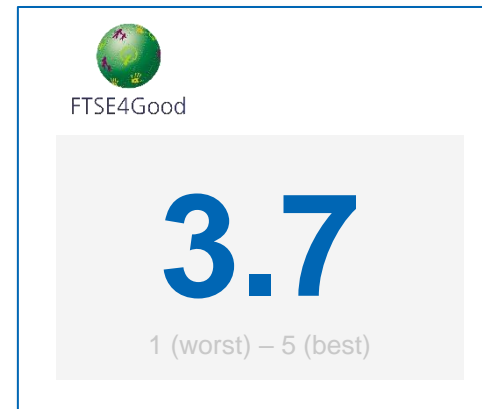
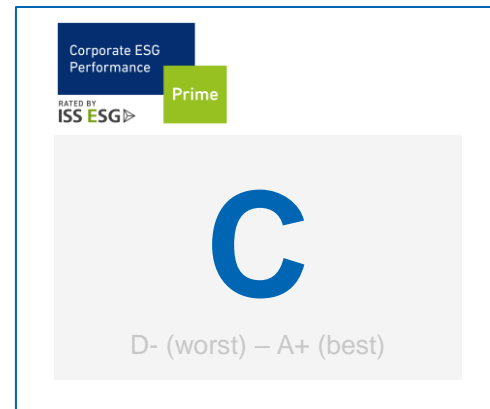
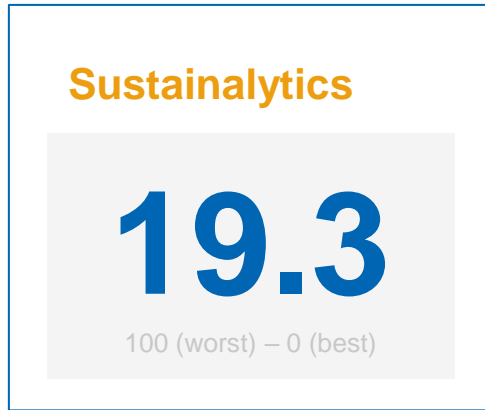


Focus diversity



External Ratings

Our ratings reflect our continuous efforts to drive sustainable change

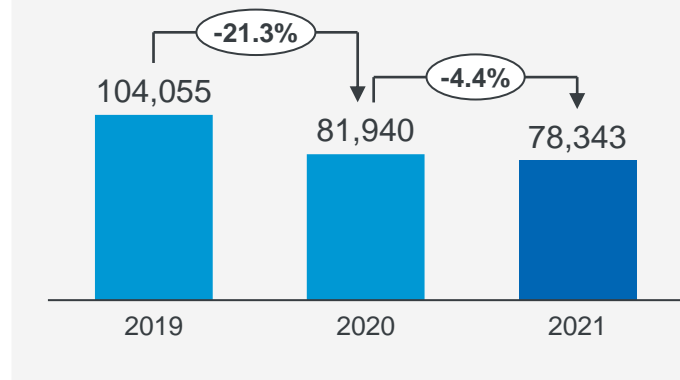


Note: for further information see https://www.talanx.com/en/talanx-group/sustainability/esg_ratings

Selected ESG figures

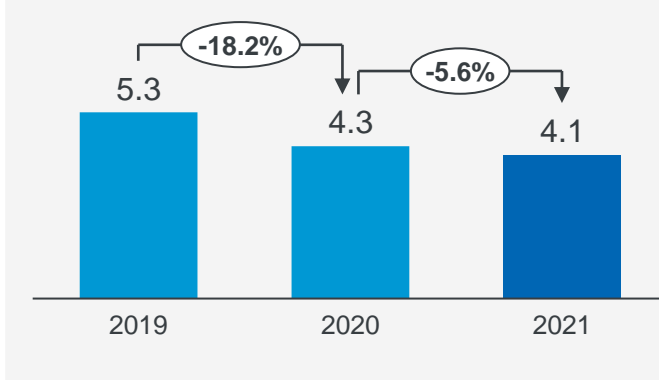
Total energy consumption

In MWh



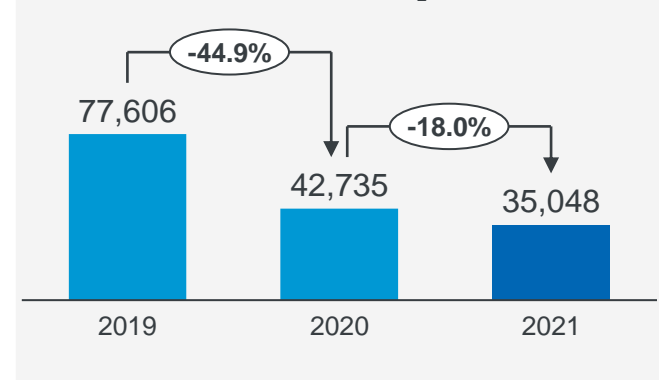
Energy consumption per employee

In MWh

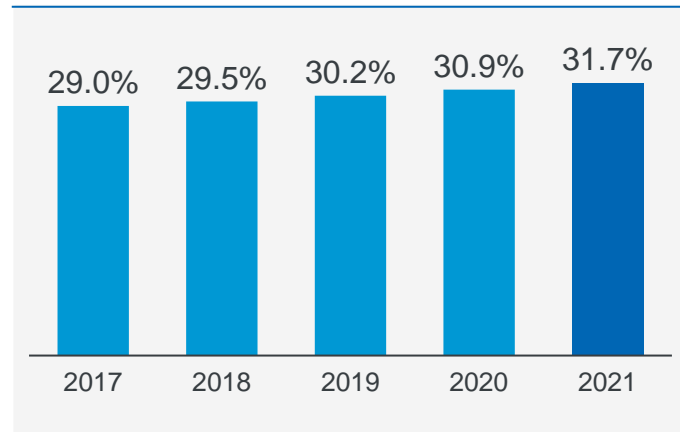


Total GHG emissions¹ (Scope 1 + 2 + 3)

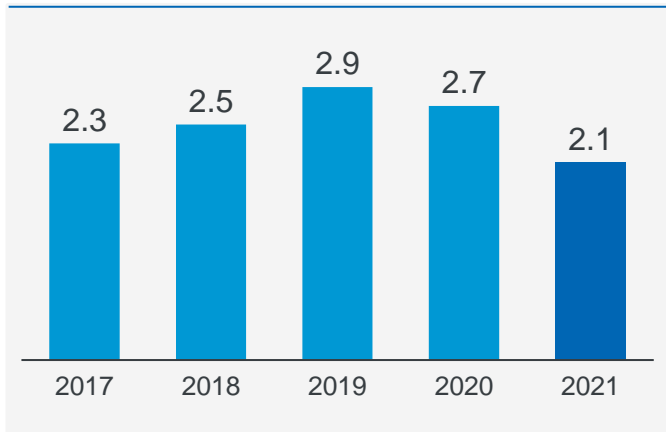
Location based, in metric tons CO₂



Women in management positions²

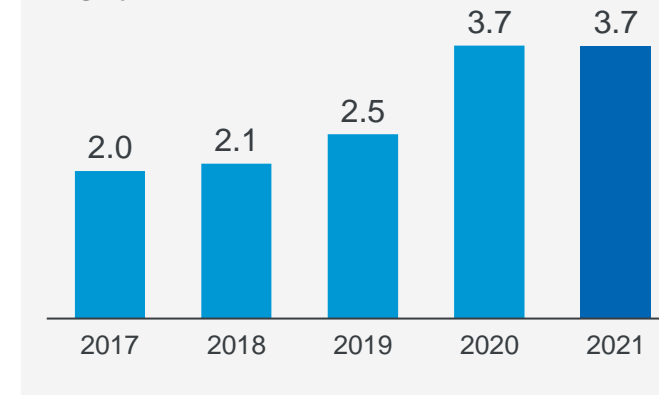


Training days per employee (p.a.)



Investments in infrastructure

In EURbn



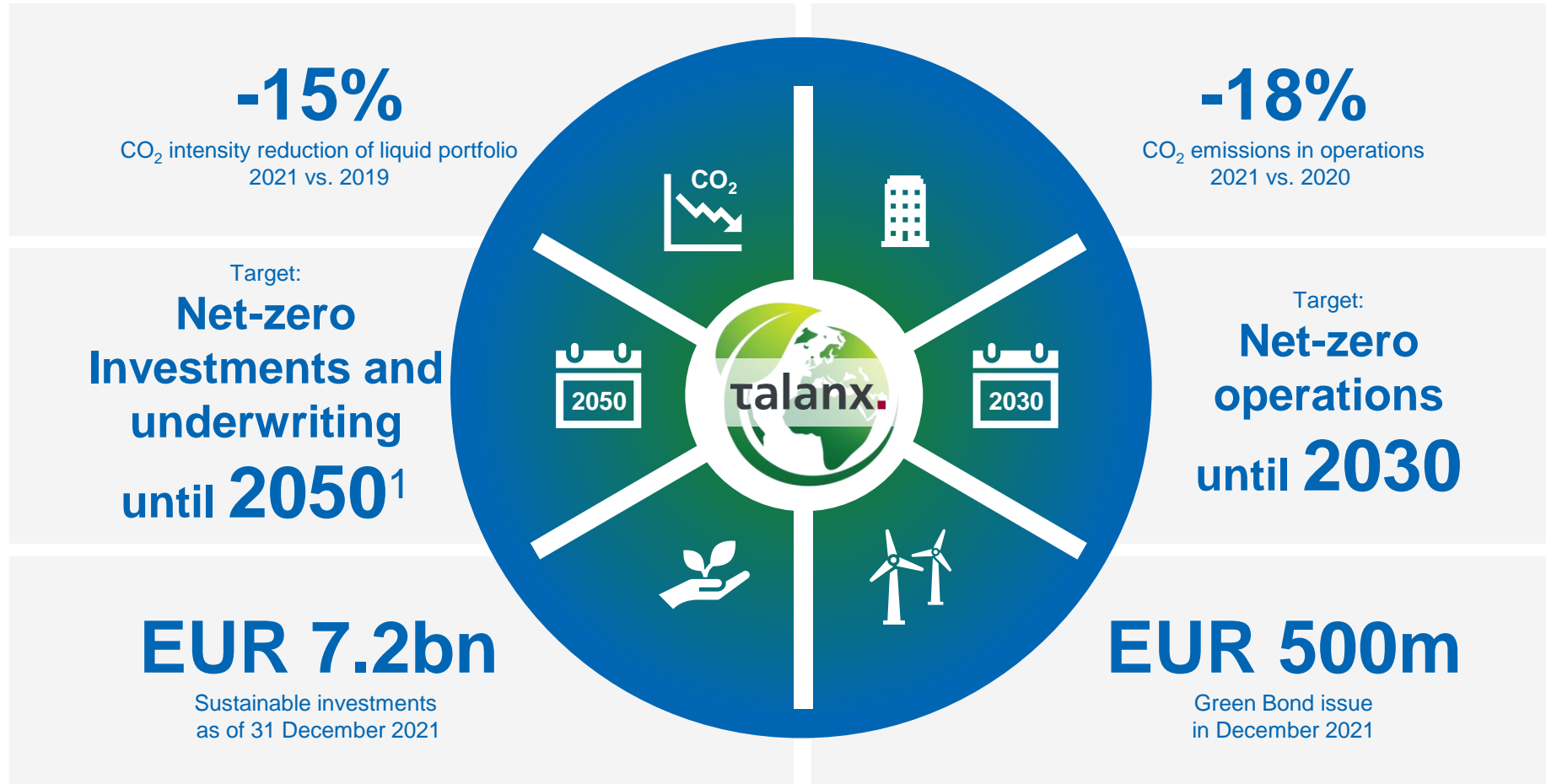
¹ GHG means greenhouse gas. Total emissions are based on actual, estimated or extrapolated data. All assumptions and methods of calculation are in line with the principles set out in ISO 14065.

² Comprises the entire Talanx Group (including Hannover Re).

Highlights

Sustainability Report 2021

Click here to discover our Sustainability Report



¹ Underwriting: Full withdrawal from thermal coal infrastructure and oilsands until 2038

Sustainable investments

EUR 7.2bn reached by end of 2021

Sustainable investments

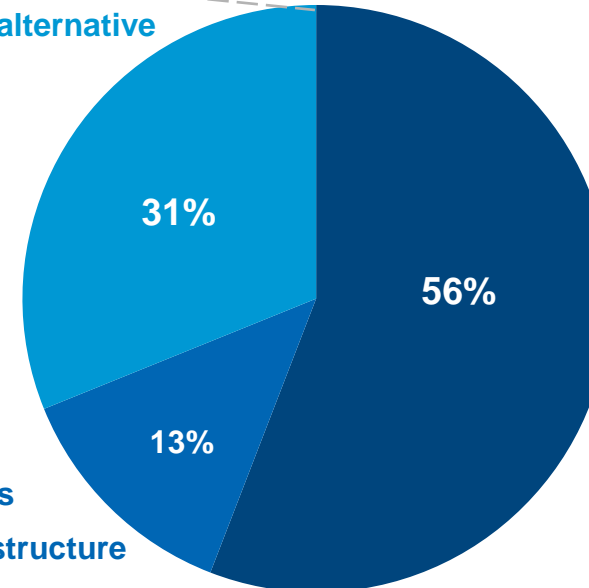
As of 31 Dec 2021, in EURbn



Investment categories

In %

Renewable energy and alternative investments funds
Sustainable real estate
Sustainable bonds



Renewable energy
Clean transportation
Natural resources
Green bonds
Electrical grid

Social bonds
Social infrastructure

Additional information

This presentation contains forward-looking statements which are based on certain assumptions, expectations and opinions of the management of Talanx AG (the "Company") or cited from third-party sources. These statements are, therefore, subject to certain known or unknown risks and uncertainties. A variety of factors, many of which are beyond the Company's control, affect the Company's business activities, business strategy, results, performance and achievements. Should one or more of these factors or risks or uncertainties materialize, actual results, performance or achievements of the Company may vary materially from those expressed or implied as being expected, anticipated, intended, planned, believed, sought, estimated or projected in the relevant forward-looking statement. The Company does not guarantee that the assumptions underlying such forward-looking statements are free from errors nor does the Company accept any responsibility for the actual occurrence of the forecasted developments. The Company neither intends, nor assumes any obligation, to update or revise these forward-looking statements in light of developments which differ from those anticipated.

Where any information and statistics are quoted from any external source, such information or statistics should not be interpreted as having been adopted or endorsed by the Company as being accurate.

Presentations of the Company usually contain supplemental financial measures (e.g., return on investment, return on equity, gross/net combined ratios, solvency ratios) which the Company believes to be useful performance measures but which are not recognised as measures under International Financial Reporting Standards, as adopted by the European Union ("IFRS"). Therefore, such measures should be viewed as supplemental to, but not as substitute for, balance sheet, statement of income or cash flow statement data determined in accordance with IFRS. Since not all companies define such measures in the same way, the respective measures may not be comparable to similarly-titled measures used by other companies. This presentation is dated as of 16 May 2022. Neither the delivery of this presentation nor any further discussions of the Company with any of the recipients shall, under any circumstances, create any implication that there has been no change in the affairs of the Company since such date.

tal anx.

Insurance. Investments.